



**RAZER
INDUSTRIES PTY LTD**



Product Information Sheet

Razer-Lag™ Ceramic Pulley Lagging

Function

To provide positive drive between pulley shell and conveyor belt under conditions beyond the capacity of normal rubber lagging.

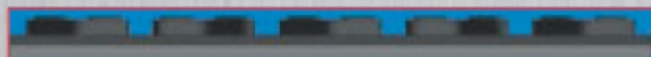
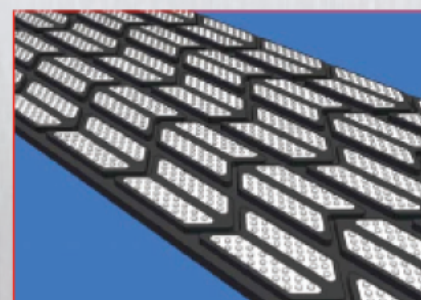
- > To provide high levels of resistance to abrasion.
- > To positively displace water and fugitive material that would otherwise cause belt slip.
- > To protect the pulley shells from wear leading to early failure.
- > To enable ease of installation without the need to remove the pulley from the conveyor.

Advantages

- > 250mm wide strips with 82mm-repeating pattern for cost-effective installation and pattern matching.
- > Is available with both FRAS and Natural rubber grades in thicknesses of 10mm, 12mm, 16mm and 20mm.
- > Each ceramic tile is encased by rubber on five sides ensuring superior bond.
- > Significantly improved drive values enable the reductions in take up tensions thus increasing belt and splice life. Lobby-Lag ceramic provides a "Geared Drive" effect to difficult conveyors.
- > Superior water shedding from the Arrowhead Pattern.
- > Supplied pre buffed on both edges and bonding face for ease of installation and accurate T.I.R.
- > Bonding layer of Neoprene rubber ensures superior bond between pulley shell and lagging. This also means that abrasion resistance is not compromised to achieve high bond.

Applications

- > For high wear, high tension, contaminated and/or wet operating environments.
- > For increased conveyor drive efficiency to prevent slip.



Distributor Details:

PT. AUSTRALIAN BELT SCRAPER INDONESIA

Jalan Cihampelas 48B, Bandung 40116

West Java, Indonesia.

Phone +62 (22) 4264000

Fax +62 (22) 4232694

E-mail marketing@absindo.com

www.absindo.com

Razer Industries Pty Ltd

ABN 25 832 026 848

